

Humanitarian Needs Overview 2022 - oPt DASHBOARD

The context in the occupied Palestinian territory (oPt) remains a protracted protection crisis, where too many Palestinians struggle to meet their most basic needs and live in dignity. The crisis is characterized by more than 54 years of Israeli military occupation, lack of respect for international humanitarian and human rights law, internal Palestinian political divisions, and recurrent escalations of hostilities between Israel and Palestinian armed groups. The COVID-19 pandemic has exacerbated the crises in the past two years. This year has witnessed further deterioration in the humanitarian situation in the oPt due to:

The most serious escalation of hostilities between Palestinian armed factions in the Gaza Strip and Israel since 2014, which has aggravated Gaza's chronic shelter, infrastructure and energy deficits.

Restrictions on the movement of people and goods imposed by Israel, citing security concerns, which impedes the access and movement of people and goods into and out of Gaza, hampers the implementation of infrastructure projects and delays economic recovery.

An increase in conflict-related Palestinian casualties in the West Bank, including East Jerusalem, and in settler-related violence against Palestinians and their communities.

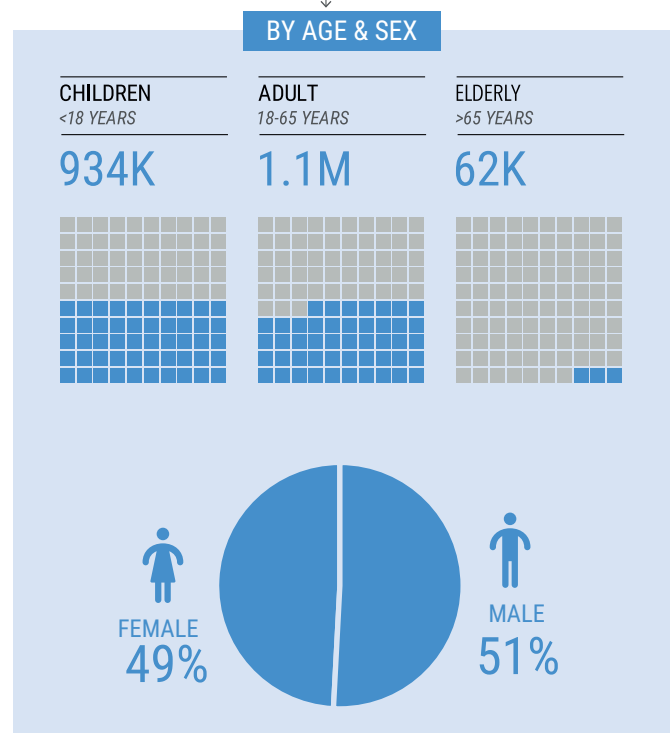
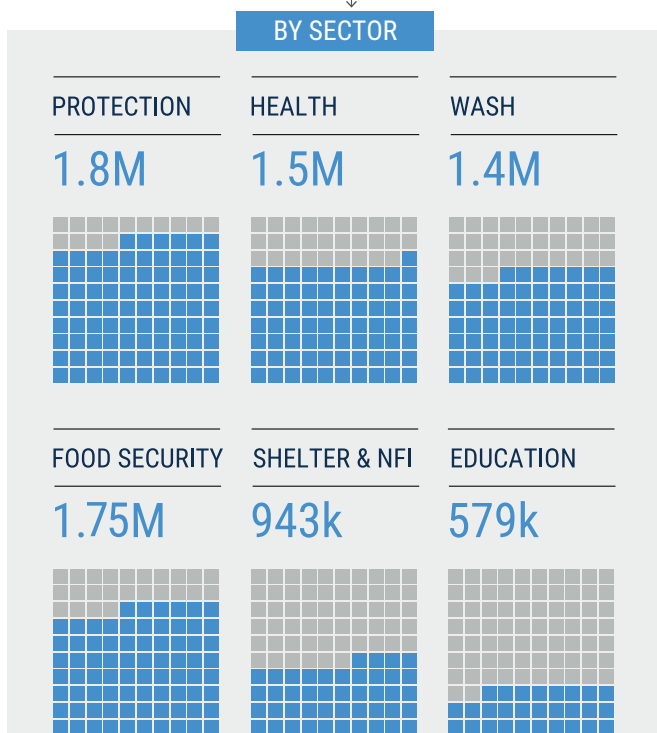
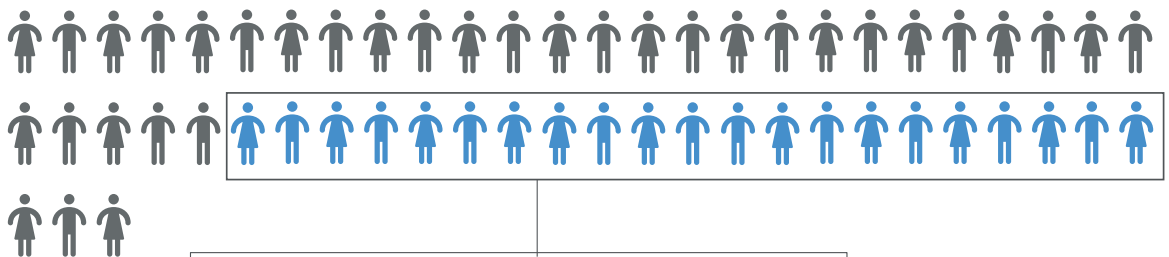
The restrictive and discriminatory planning regime applied by Israel in Area C and in East Jerusalem, which continues to prevent Palestinians from addressing basic housing, livelihood and basic service needs.

The high level of demolitions and seizures of Palestinian structures on the grounds of a lack of Israeli-required building permits.

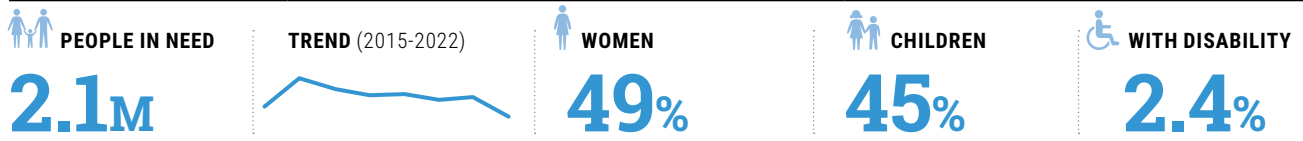
Imposition of physical and administrative measures which restrict humanitarian programmes, including constraints on the delivery of materials needed, and limitations on the implementation of projects that involve building, expanding or rehabilitating infrastructure in the Gaza Strip, Area C, the H2 area of Hebron and East Jerusalem.

People in Need

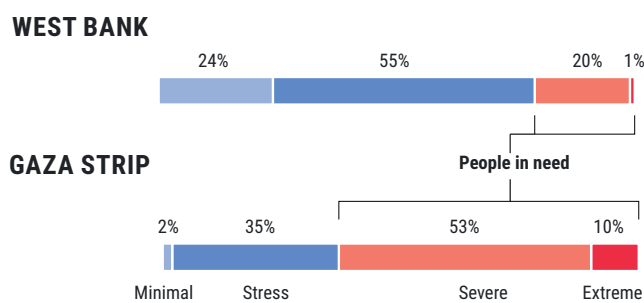
2.1M



Key Findings

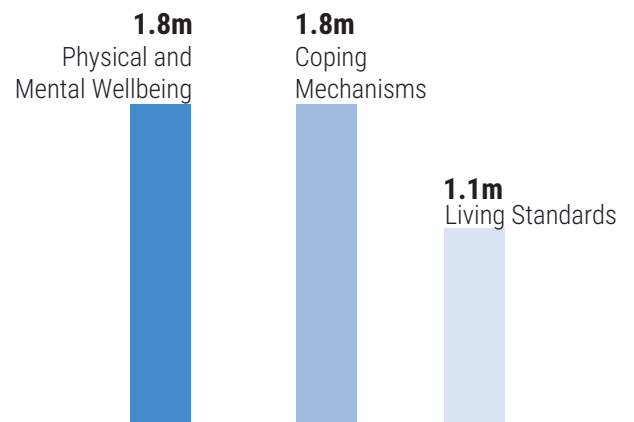


PIN by Geography and Severity



According to the Multisectoral Needs Assessment (MSNA) conducted in July 2021, 63 per cent of Gaza (1.3 million) will require some form of humanitarian assistance in 2022 compared to 21 per cent of the West Bank (0.75 million).

By Humanitarian Condition



In the inter-sectoral model (see annexes), the living Standards indicators has 1.1 million PIN, followed by Physical and mental well-being by 1.8 million PIN, and the coping mechanism by 1.8 million PIN.

By Age and Gender

AGE AND GENDER	PEOPLE IN NEED	% PIN
Male 0- <18	476k	23%
Female 0- <18	458k	22%
Male 18-65	550k	27%
Female 18-65	529k	25%
Male 65+	32k	2%
Female 65+	31k	1%

By Population Groups

POPULATION GROUP	PEOPLE IN NEED
Refugees outside camps	947K
People living below the poverty level	800K
Refugees inside camps	464K
Shelter damaged (partial and major damage)	280K
Female headed households	228K
Farmers	125K
People with disabilities	50K
Internally displaced people	12.5K

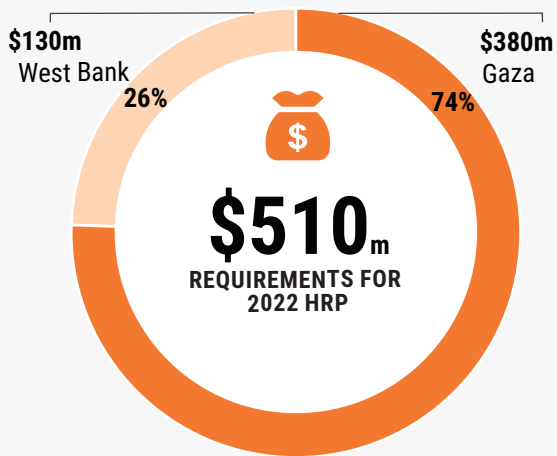
HUMANITARIAN RESPONSE PLAN 2022 - oPt DASHBOARD

Building on the analysis elaborated in the Humanitarian Needs Overview (HNO), the humanitarian community has established three strategic objectives to guide the 2022 humanitarian response. Each strategic objective is complemented by a set of specific objectives that detail the intermediate desirable results to be achieved through a combination of direct service provision, in-kind support, cash and voucher assistance (CVA), community-based support and capacity-strengthening.

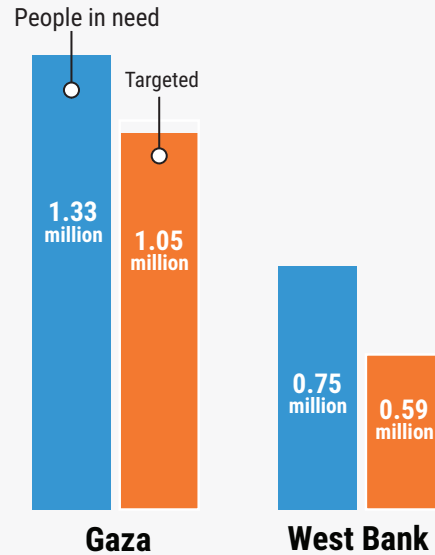
Providing immediate humanitarian assistance while addressing the root causes of vulnerability, including peace and reconciliation, is the essence of the Humanitarian – Development – Peace (HDP) Nexus approach. In particular, Strategic Objective 3 reflects this approach, and interventions under this objective will be linked to more medium - to longer term interventions, in consultation with development actors.



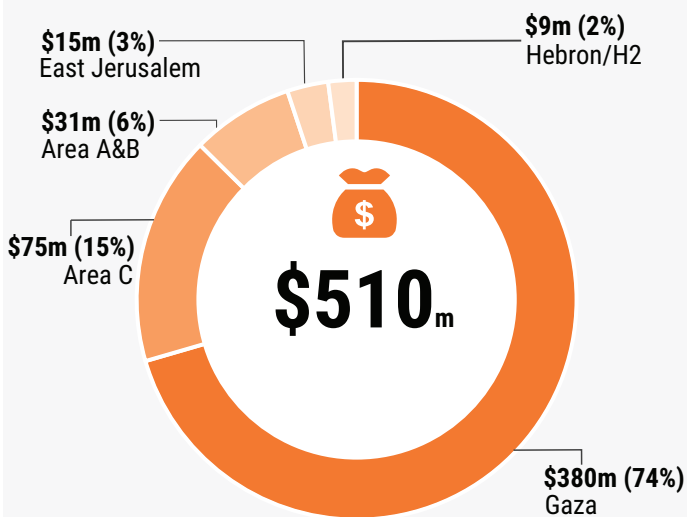
REQUIREMENTS BY REGION



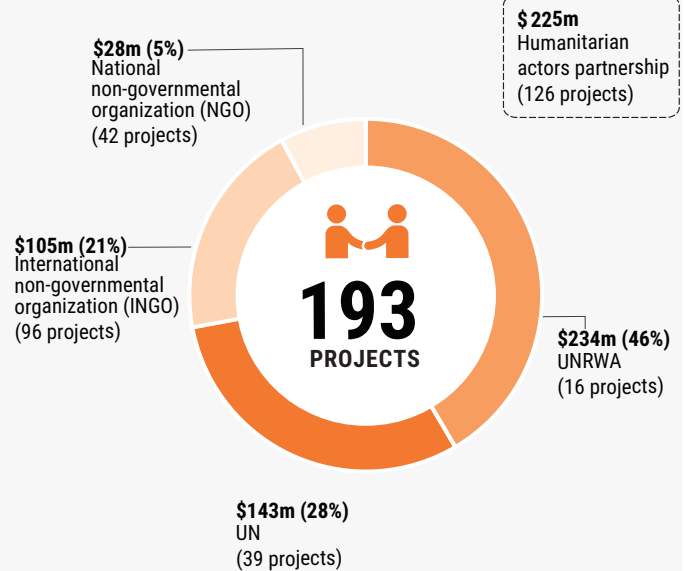
PEOPLE TARGETED AND PEOPLE IN NEED BY REGION



REQUIREMENTS BY VULNERABLE AREA



REQUIREMENTS BY ORGANIZATION TYPE



REQUIREMENTS BY CLUSTER

