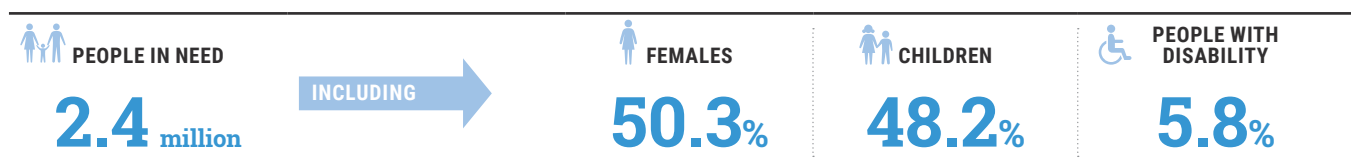


# Humanitarian Needs Overview 2020 - oPt

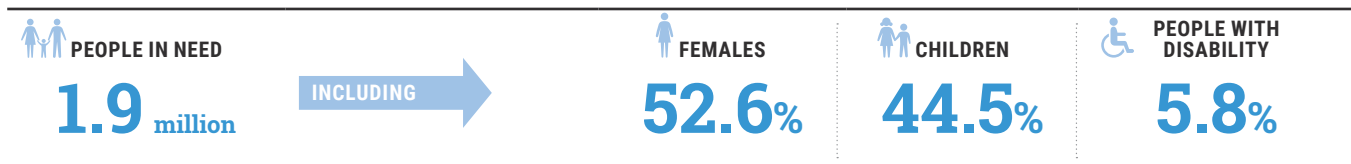
## DASHBOARD

A protracted protection crisis continues in the occupied Palestinian territory (oPt), driven by Israel's occupation, including the blockade on the Gaza Strip; insufficient respect for international law; the internal divide between the Palestinian Authority (PA) and Hamas; and recurrent escalations of hostilities between Israeli military forces and Palestinian armed groups. In Gaza, the humanitarian situation remains dire, as evidenced by high rates of unemployment, poverty and food insecurity, while sporadic outbreaks of violence are threatening to ignite a wider confrontation. In the West Bank, the rate of demolitions of Palestinian-owned structures and settler violence remain high, and many Palestinians, particularly in Area C, East Jerusalem, and Hebron city (H2), continue to face the risk of forcible transfer. Across the oPt, some 2.4 million Palestinians will need some form of humanitarian assistance in 2020, the majority in Gaza. For the 2020 Humanitarian Needs Overview (HNO), the Humanitarian Country Team (HCT) in the oPt has identified the below humanitarian consequences that relate to the protection of civilians and forced displacement, access to essential services, and erosion of resilience that translate into needs, with an estimated number of people identified in need for each consequence.\*



## SUMMARY OF HUMANITARIAN CONSEQUENCES

### Critical problems related to the Protection of Civilians and Forced Displacement

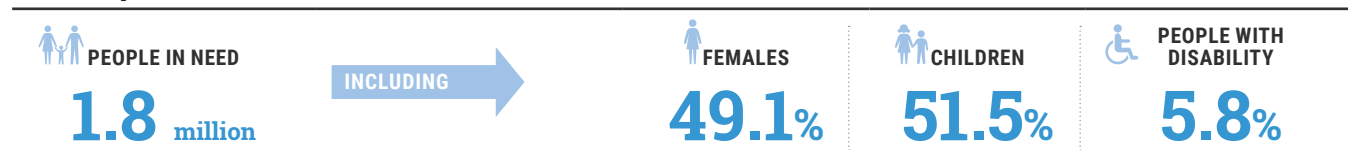


Seventy-nine per cent of 2.4 million have been identified as being affected in some way by the humanitarian consequences related to protection and forced displacement. The 2020 HNO findings identified that violations of international humanitarian law (IHL) and International human rights law (IHRL) are at the heart of the oPt crisis and are the main driver of humanitarian needs in oPt.

HUMANITARIAN CONSEQUENCE	PEOPLE IN NEED
Protection risks related to military occupation	<b>1.9m</b>
Psychosocial distress and mental disorders	<b>498k</b>
Gender based violence	<b>365k</b>
Attacks against healthcare facilities and workers	<b>115.9k</b>
Conflict-related violence	<b>98.5k</b>
Forcible transfer and displacement, and risk thereof	<b>63k</b>
Violations of childrens' rights	<b>30.6k</b>
Education related violations	<b>13.6k</b>

\*Palestinians in the oPt face a range of protection threats, including threats to life, liberty and security, destruction or damage to homes and other property, forced displacement, restrictions on freedom of movement and on access to livelihoods, and lack of accountability and effective remedy.

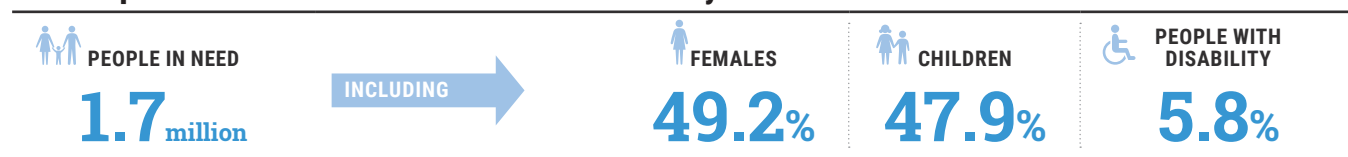
## Critical problems related to access to essential services



Seventy-five per cent of 2.4 million have been identified as being affected in some way by the humanitarian consequences related to limited access to essential services. The 2020 HNO findings demonstrated that many Palestinians are highly vulnerable and need improved access to basic services, including education, health, WASH and adequate shelter. In Gaza, the blockade, recurrent outbreaks of hostilities and the internal Palestinian political divide have continued to contribute to a serious deterioration in the access of the population to basic services. In the West Bank, strict movement and access restrictions, coupled with extreme limitations on planning and development, have prevented people living in affected areas, particularly Area C, East Jerusalem and Hebron H2, from accessing essential services.

HUMANITARIAN CONSEQUENCE	PEOPLE IN NEED
Limited access to safe drinking and domestic water services	1.8m
Inadequate sanitation and hygiene conditions	1.6m
Limited availability and accessibility of essential life-saving health services, maternal and child health services, reproductive health services, and health care for the elderly, as well as reduced nutrition	1.18m
Challenges in accessing education	389k
Inadequate living conditions	158k

## Critical problems related to resilience and recovery



Seventy-one per cent of the 2.4 million people have been identified as being affected in some way by humanitarian consequences related to erosion of resilience. The 2020 HNO identified the multiple ways in which the erosion of resilience of Palestinians takes place. People vulnerable to rights violations struggle to cope with prolonged stresses to their livelihoods. These prolonged stresses have also left Palestinians less able to cope with sudden shocks such as spikes in conflict in Gaza, demolitions in the West Bank, and natural or environmental hazards, such as winter storms, the longer-term effects of climate change, and the environmental impacts of inadequate water and sanitation services and electricity.

HUMANITARIAN CONSEQUENCE	PEOPLE IN NEED
Food insecurity	1.7m
Limited emergency shelter preparedness	600k
Limited emergency education preparedness	280k
Limited WASH preparedness capacity during emergencies and shocks	151k
Limited health preparedness capacity leading to increased risk of mortality and morbidity	43k

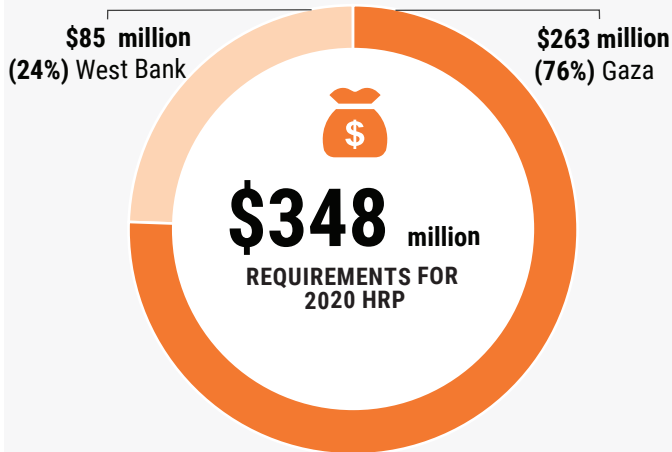
# HUMANITARIAN RESPONSE PLAN 2020 - oPt

## DASHBOARD

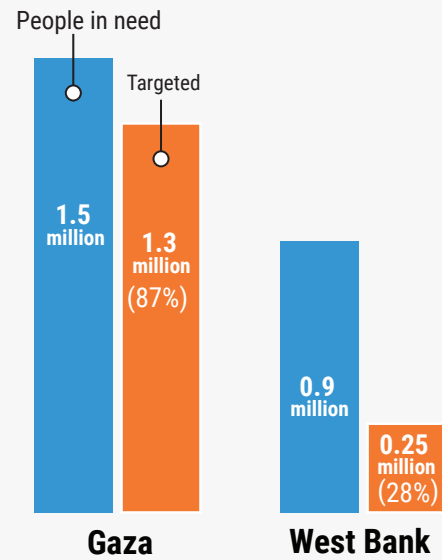
In the third, and final, year of the 2018-2020 Humanitarian Response Strategy, partners will aim to assist 1.5 million of the most vulnerable Palestinians, with a financial requirement of \$348 million. This is similar to the amount requested in 2019, but significantly lower than the \$550 million sought in the 2018 appeal. The decrease does not reflect a reduction in the scope of need but rather an acknowledgement that the continuing underfunding for humanitarian operations, as well as the operational constraints affecting humanitarian agencies, will not be reversed in the coming year; hence the prioritization of assistance to the most vulnerable among the totality of people in need. However, the humanitarian community stands ready and able to fill the gap, should operational conditions improve and funding increase.



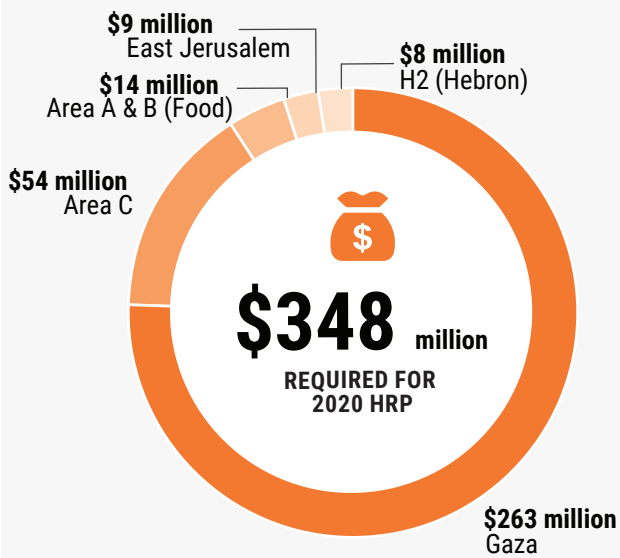
## REQUIREMENTS BY REGION



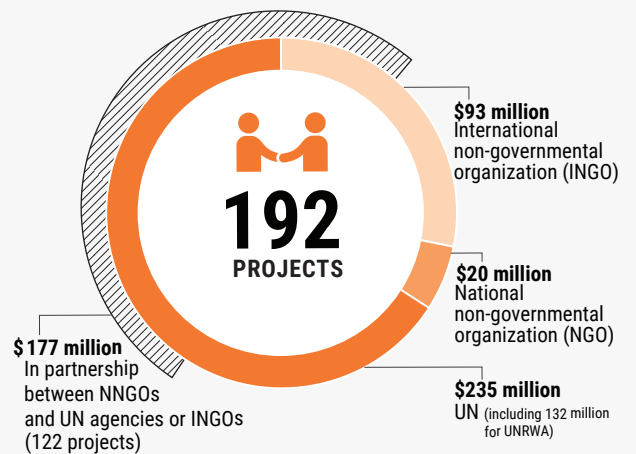
## PEOPLE TARGETED AND PEOPLE IN NEED BY REGION



## REQUIREMENTS BY VULNERABLE AREA



## REQUIREMENTS BY ORGANIZATION TYPE



## REQUIREMENTS BY CLUSTER

